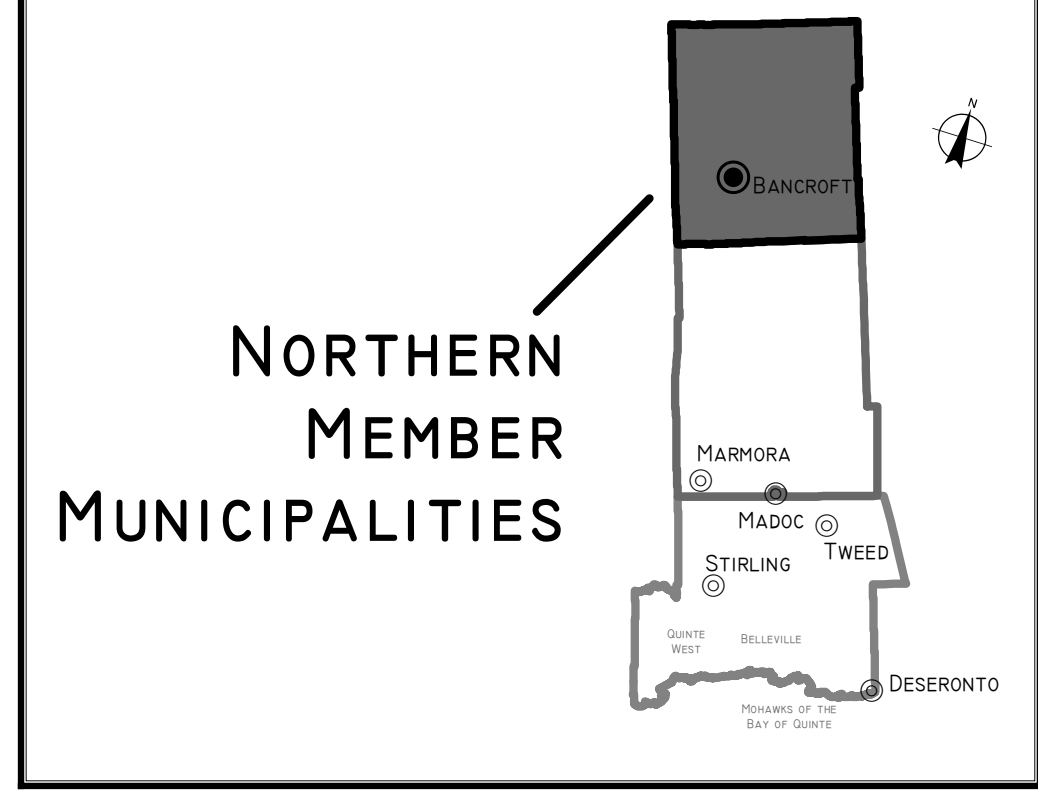


HASTINGS COUNTY OFFICIAL PLAN

LAND USE DESIGNATIONS OP-A SCHEDULE



THIS IS TO CERTIFY THAT THIS MAP WAS ADOPTED AS OFFICIAL PLAN SCHEDULE OP-A OF THE COUNTY OF HASTINGS OFFICIAL PLAN 2017-0030. PLOT DATE: 12/18/2017 SIGNING DATE: 12/19/2017

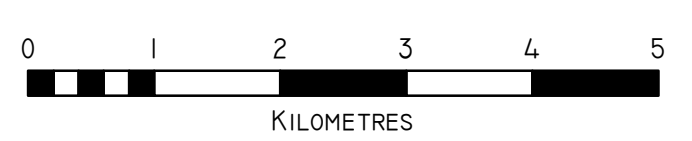
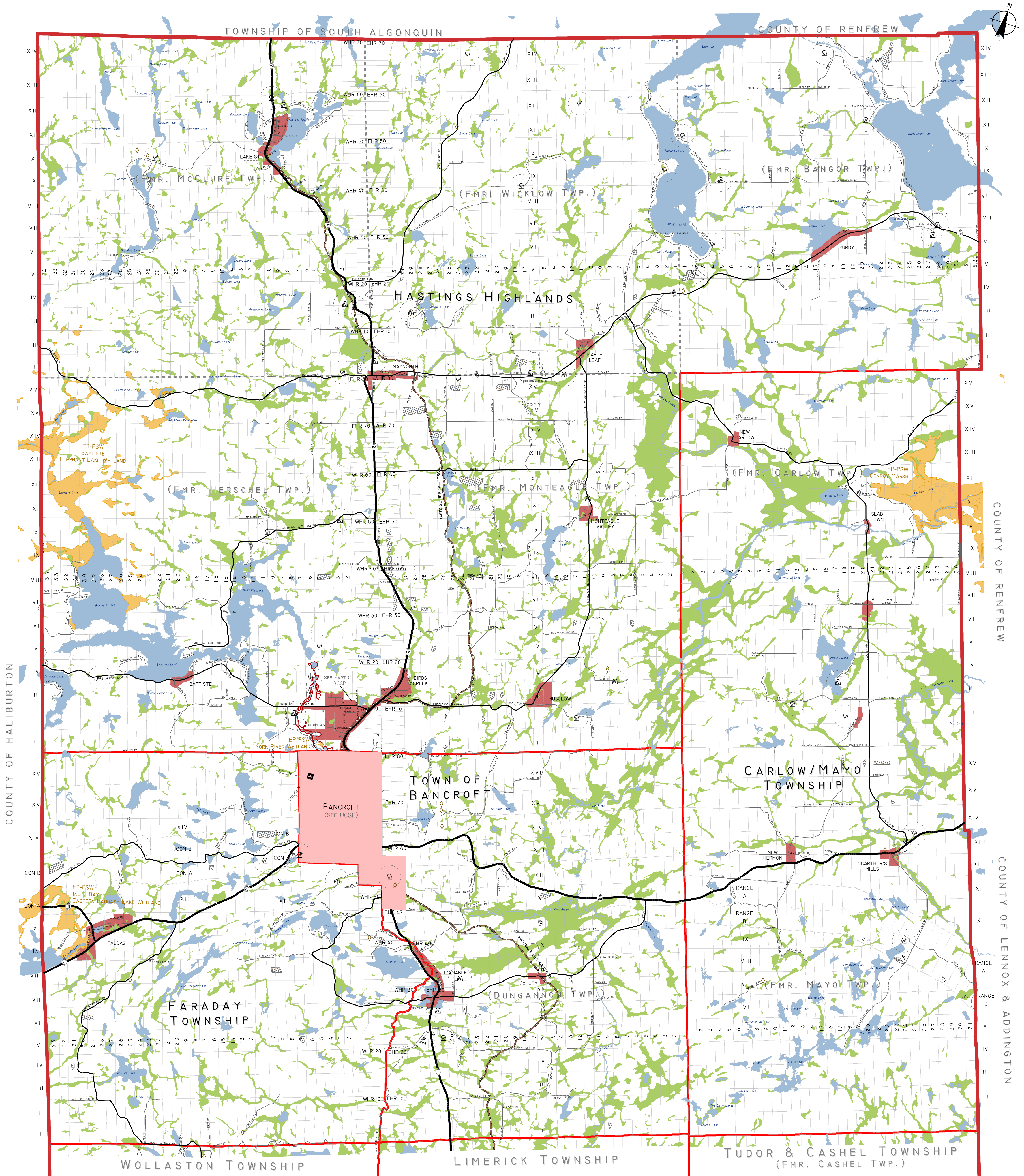
JIM DUFFIN, C.A.O.-CLERK OF HASTINGS COUNTY
RODNEY COONEY, WARDEN OF HASTINGS COUNTY

THIS SCHEDULE FORMS A PART OF THE COUNTY OF HASTINGS OFFICIAL PLAN AND MUST BE READ IN CONJUNCTION WITH THE WRITTEN TEXT. VISIT WWW.HASTINGSCOUNTY.COM FOR THE FULL OFFICIAL PLAN. PLEASE REFER TO SECONDARY PLAN SCHEDULES FOR DETAILED MAPPING OF URBAN AREAS. SOME SPECIAL POLICY AREAS MAY ALSO HAVE DETAILED MAPS WITHIN THE TEXT.

PRODUCED BY THE COUNTY OF HASTINGS PLANNING & DEVELOPMENT DEPARTMENT. DATA SUPPLIED, UNDER LICENSE, BY MEMBERS OF THE ONTARIO GEOSPATIAL DATA EXCHANGE AND THE COUNTY OF HASTINGS. THE COUNTY OF HASTINGS DISCLAIMS ALL RESPONSIBILITY FOR ERRORS, OMISSIONS OR INACCURACIES IN THIS PUBLICATION.

June 22, 2018

- LAND USE DESIGNATIONS**
- PRIME AGRICULTURE
 - RURAL/WATERFRONT
 - ENVIRONMENTAL PROTECTION
 - ENVIRONMENTAL PROTECTION - PROVINCIALY SIGNIFICANT WETLAND
 - EXTRACTIVE (LARGE SITE)
 - EXTRACTIVE (SMALL SITE)
 - URBAN
 - HAMLET
 - WATERBODY
 - WELLHEAD PROTECTION AREA
 - INTAKE PROTECTION ZONE
 - ISSUES CONTRIBUTING AREA
 - WELL HEAD PROTECTION AREA - E
 - WASTE MANAGEMENT
 - SITE SPECIFIC POLICY AREA (LARGE SITE)
 - SITE SPECIFIC POLICY AREA (SMALL SITE)
 - ENGINEERED FLOODLINE
- GEOGRAPHIC FEATURES**
- NON OFFICIAL PLAN AREA
 - LOT & CONCESSION LINE
 - GEOGRAPHIC TOWNSHIP BOUNDARY
 - MUNICIPAL BOUNDARY
 - COUNTY BOUNDARY
- INFRASTRUCTURE**
- HIGHWAY (PROV. & FMR. PROVINCIAL)
 - COLLECTOR ROAD (FORMER COUNTY)
 - MUNICIPAL ROAD
 - RAILWAY
 - HASTINGS HERITAGE TRAIL
 - TRANSCANADA TRAIL
 - AIRFIELD



SEE CENTRAL "OP-A" SCHEDULE